

Twelfth Annual

**Mid
LGBTQA**



**Atlantic
Conference**



**Living Proud:
Your Presence Matters
November 1 - 3, 2019**

Bloomsburg University of Pennsylvania



2019 Mid-Atlantic LGBTQA Conference Planning Committee

Jessy Defenderfer, Conference Chair
Damien Marken, Conference Vice-Chair
Asa Kelley, Conference Operations Coordinator
Monica Johnson, Staff Coordinator
Albra Wheeler, Staff Coordinator
Beth Brennan, Treasurer
Mark Usry, Founder
Dave Kube
Gretchen Osterman
Shavonne Shorter
Anna Turnage
Craig Young

The Committee would like to thank the following for their valuable contributions to the Conference:

Bloomsburg University
Bashar Hanna, President
College of Liberal Arts, Dean James Brown
College of Education, Dean Darlene Perner
Zeigler College of Business, Dean Todd Shawver
Title IX Office, Jennifer Raup
Bloomsburg University Equality Alliance
LGBTQA Commission
LGBTQA Resource Center
Performing Arts Facilities, Abby Manns
Kehr Union Scheduling, Kristi Getty
Kehr Union Media Services, Ken Dunlap
ARAMARK at Bloomsburg University
Bloomsburg University Police

Welcome from the Conference Chair

Dear Conference Attendees:

Welcome to the Twelfth Annual Mid-Atlantic LGBTQA Conference! On behalf of the Bloomsburg University LGBTQA Conference Committee, let me express our excitement in having you on campus. We are so glad that YOU are here. This year's theme is *Living Proud: Your Presence Matters*. We live in a conflictual time where open acceptance and living proud has increased for some in our community, while others continue to experience open hostility and violence in their everyday lives. This year's conference invites us to form new friendships, learn new tools to navigate the world, build networks of support, and remind each other to live proud, in all our diversity, because your presence matters.

I am thrilled by all of the new features to this year's conference. First, we kick-off the conference with the BU Equality Alliance's Drag Show. The talented students of BUEA help to make this conference happen each year. I am grateful and excited for our keynote speaker, Hanne Blank. Her scholarship and activism at the intersection of body, self, and culture provide a strong foundation for this year's theme of living proud. I cannot wait to absorb the knowledge and skills of all of our presenters. I am particularly excited to participate in a new feature to this year's session offerings—identity forums—plan your forum attendance at 11:15am & 4:30pm! Finally, we have an evening of social activities to strengthen our friendships on Saturday before we say goodbye on Sunday afternoon.

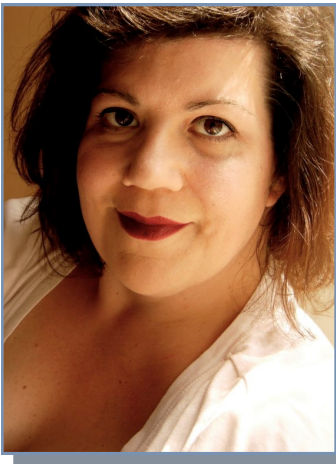
This conference would not occur without the tireless efforts and expertise of a number of individuals. A big thank you to the conference committee: Damien Marken as Vice Chair, Asa Kelley as Operations Coordinator, Beth Brennan as Treasurer, and Monica Johnson as Staff Coordinator. The committee is held together by the glue of its invaluable members—Craig Young, Gretchen Osterman, Shavonne Shorter, Anna Turnage, and Albra Wheeler. This year we have a number of volunteers, faculty and students, that have stepped into a variety of roles of which we could not operate so smoothly without you.

Finally, thank YOU for attending—you are the reason we continue to organize this conference. You and your presence matter to us.

Sincerely,
Jessy Defenderfer, Conference Chair



About our Keynote Speaker—Hanne Blank



Hanne Blank, author and activist, writes books about the nexus of bodies, self, and culture. Joyfully spanning the town/gown divide as well as the mind/body split, her books include the histories *Straight: The Surprisingly Short History of Heterosexuality* and *Virgin: The Untouched History*, the cult classic sex and body-acceptance book *Big Big Love: A Sourcebook on Sex for People of Size and Those Who Love Them*, *The Unapologetic Fat Girl's Guide to Exercise and Other Incendiary Acts*, and numerous others.

She is an engaging lecturer about body image and body respect, as well as about the history and politics of mainstream sexuality. Her work has been featured in periodicals ranging from *Penthouse* to *Bitch*. Hanne is currently Visiting Assistant Professor of Women's and Gender Studies at Denison University and has taught in various capacities on campuses including Brandeis and Tufts. She lives with her partner of 15 years in a 175-year-old mill cottage on a dirt road in the middle of Baltimore.

She has spoken in venues ranging from the inaugural Femme Conference in San Francisco to Harvard University. Hanne's list of talks includes: "*Virgins and Other Indefinite Articles: Thinking Historically about Sexuality, Definition, and Experience*," "*Mommy, Where Do Heterosexuals Come From? A Brief History of Sexual Orientation*," and "*Learning from Big Big Love: What A Decade of Talking to People about Weight and Sex Has To Tell Us About Size and Sexuality*."

Thanks to all of the institutions represented at this year's conference!

AIDS Resource	Geisinger Health System	Penn State Wilkes-Barre
Alderson Broaddus University	Indiana University of Pennsylvania	Pennsylvania College of Technology
Bloomsburg University	James Madison University	PFLAG Danville
Bucknell University	Juniata College	Princeton University
California University of Pennsylvania	Keystone College	Seton Hill University
Caring Communities	Lock Haven University	Shiloh United Church of Christ
Cedar Crest College	Luzerne County Community College	Shippensburg University
Central Connecticut State University	Lycoming College	Southern New Hampshire University
CMSU	Millersville University	Susquehanna University
Delaware Valley University	Nakawa Institute of Business Studies	The Pennsylvania Youth Congress
East Stroudsburg University	Nazareth College	United States Navy
Edinboro University	Newcastle University	West Chester University
Faith UCC State College	Penn State Altoona	Widener University
Foundation for Individual Rights in Education	Penn State Mont Alto	Wiley College
	Penn State University Park	

Other Entertainment in Bloomsburg



Student Art Exhibition: *Presence* Opening Reception

Friday, 6:00 - 8:00 p.m., The Gallery at The Greenly Center, 55 East Main St.

This event is free and open to the public.

Student Theatre Production: *Be More Chill*

Friday & Saturday, 7:30 p.m. and Sunday, 3:00 p.m.

Alvina Krause Theatre, 226 Center St.

Jeremy Heere is just an average teenager. That is, until he finds out about "The Squip" – a tiny supercomputer that promises to bring him everything he desires most: a date with Christine, an invite to the raddest party of the year and a chance to survive life in his suburban New Jersey high school. But is being the most popular guy in school worth the risk?

Please note, this event is not included in conference registration.

Tickets \$12 adults, \$8 seniors/non-BU students, free for BU students with ID.

Any remaining seats will be available at the door starting one hour before curtain time. Cash only please.



Schedule—Friday, November 1, 2019

6:00 - 10:00 p.m.

Haas Center for the Arts, Elevator Gallery

Welcome Reception

Join your fellow conference attendees for a casual reception before and during the drag show.
Please note, food and drink is not permitted in the auditorium and should remain in the gallery area.

8:00 p.m.

Haas Center for the Arts, Mitrani Hall

A Nightmare on East 2nd Street

Join us for our semi-annual student drag show in a new and larger venue! Hosted by Harpy Daniels and Trixy Valentine!
Proceeds benefit Caring Communities and the BU Equality Alliance.
This event IS included with conference registration. Tickets for non-conference attendees are \$2.

Schedule—Saturday, November 2, 2019

8:00 a.m.

Registration — Kehr Union Building, Ballroom Lobby (Fourth Floor)

8:00 a.m.

Continental Breakfast — Kehr Union Building, Ballroom

9:00 - 9:30 a.m.

Kehr Union Building, Ballroom

Welcome and Opening Remarks

Jessy Defenderfer, Conference Chair, Assistant Professor of Political Science, Bloomsburg University
Mark Usry, LGBTQA Commission Chair, Associate Professor of Business Law, Bloomsburg University
Peter Kelly, President's Chief of Staff, Bloomsburg University

Emotional Support Humans

We realize that some topics discussed during the conference may be emotional.

Support is available. Stop by the registration/info desk or email

MidAtlanticLGBTQA@bloomu.edu to speak with someone.

All conversations are private.

STI Testing

STI Testing provided by Caring Communities is available in
Kehr Union Building, Room 411



10:00 AM - 11:00 AM — Session 1

Inclusive Drag: Starting one at your college

Session 1A — Kehr Union Building 345A

Opening the doors to a drag show at a college. This session will allow people to learn what it takes to start, create, and expand drag shows at their college. An insight into what it takes and what is needed to create an inclusive show for all who come to watch and all who perform. This is more of a discussion-based presentation where people can learn and ask questions on what the necessities are to run a drag show on campus and how to keep drag shows going. Lastly, there will be a development of how to create a drag persona for one's self.

Jacob Kelley, Graduate Student, Widener University, jpkelley02@gmail.com

A Call to Action for LGBTQ and Ally Campus Groups:

Increasing Access to PrEP and HIV Services through Community Collaboration

Session 1B — Kehr Union Building 345B

Statistics from the US Centers for Disease Control and Prevention indicate that young adults and adolescents bear a major burden in new HIV diagnoses with 21% of new infections identified between the ages of 13 and 24. Further, 80% of those new diagnoses were between 20 and 24 years. The American College Health Association issued guidelines for prescribing HIV Pre-Exposure Prophylaxis (PrEP) in university health centers. HIV experts urge campuses to include open discussion about HIV risk behaviors and not wait for students to bring up the concerns. However, initiating HIV counseling and testing services along with access to PrEP can be challenging for small-sized campus health centers that are located in rural regions lacking nearby major medical facilities. Participants will discuss practices provided in some rural counties by AIDS Resource, Inc., a community-based agency. Challenges and opportunities will be described with participants having the opportunity to share campus and community stories emphasizing collaboration.

Dr. Rick Schulze, Professor, Department of Health Science, Lock Haven University, fschulze@lockhaven.edu

Kirsten Burkhart, Executive Director, AIDS Resource, kirsten@aidsresource.com

Sigfried Aragona, RN, Clinical Case Manager/Sexual Health Specialist, AIDS Resource, sigfried@northcentralpasupportservices.org

Wes Chicko, State College Practice/Outreach Manager, AIDS Resource, wes@aidsresource.com

LGBTQA Representation in the Mainstream Media

Session 1C — Kehr Union Building 230

This session consists of three individuals from two different academic backgrounds who will be examining contemporary LGBTQA images in the mainstream media. LGBTQA characters and images have long been in mainstream media especially in television and film. While there have been some landmark depictions of LGBTQA characters, especially in recent years, the community still has an uphill battle to become mainstream in America. The panel will discuss each of their current research interests and studies as it pertains to this subject.

Prof. James Lohrey, Assistant Professor, Communication/Journalism, Shippensburg University, jblohrey@ship.edu

Dr. Misty Knight, Associate Professor, Human Communication Studies, Shippensburg University, mlknight@ship.edu

Dr. Eveline Lang, Associate Professor, Human Communication Studies, Shippensburg University, emlang@ship.edu

PASSHE Consortium Meeting

Session 1D — Kehr Union Building 231

Faculty, Staff, and Students of Pennsylvania's State System of Higher Education will meet to discuss current issues facing the LGBTQIA Community in Pennsylvania. Interested people from other institutions and states are welcome to attend.

Tedd Cogar, Consortium Chair, Associate Director, Student Conduct & LGBTQIA Support, Indiana University of Pennsylvania, tcogar@iup.edu

11:15 AM - 12:15 PM — Session 2

Lesbian Women's Identity Forum

Session 2A — Kehr Union Building 345A

This session will provide a networking opportunity for conference attendees that self identify as lesbian women.
Moderator: *Bre Reynolds*, Assistant Director of Admissions, Lock Haven University

Gay Men's Identity Forum

Session 2B — Kehr Union Building 345B

This session will provide a networking opportunity for conference attendees that self identify as gay men.
Moderator: *Dr. Rick Schulze*, Professor, Department of Health Science, Lock Haven University

Middle Sexualities' Identity Forum: Bisexual, Pansexual, Demisexual, and Queer People

Session 2C — Kehr Union Building 230

This session will provide a networking opportunity for conference attendees that self identify as bisexual, pansexual, demisexual, or queer.

Moderator: *Albra Wheeler*, Coordinator of the Women's Center, Bloomsburg University

Moderator: *Christopher Wounderly*, Graduate Student, Bloomsburg University

Transgender, Gender Fluid, and Non-Binary Peoples' Identity Forum

Session 2D — Kehr Union Building 231

This session will provide a networking opportunity for conference attendees that self identify as transgender, gender fluid, or non-binary.

Moderator: *D Coen*, Geisinger Health System

Heterosexual and Cisgender Ally Identity Forum

Session 2E — Kehr Union Building 240

This session will provide a networking opportunity for conference attendees that self identify as heterosexual, straight, or cisgender and will include discussions on being a better ally to the LGBTQ+ community.

Moderator: *Heather Marney*, Director, Geisinger Health System

12:15 - 1:30 p.m.

Lunch — Scranton Commons Dining Hall

Use the ticket included with your name badge to enter the dining area.

Please note, if you leave the dining area, reentry is prohibited.

1:45 - 3:00 p.m.

Keynote Address — Kehr Union Building, Ballroom

What I Mean When I Say Rights and Liberation: Some Thoughts on My First 50 Queer Years

When writer and historian Hanne Blank turned 50 in February 2019, she started to reflect on how being queer and being a queer activist had changed over the course of the first half-century of her life. Born the same year as the Stonewall Uprising, Blank's queer life has run a wild and wooly gamut from the Lesbian Sex Wars to the resurgence of Butch/Femme culture, from the HIV/AIDS epidemic and ACT UP! to the national legalization of same-sex marriage and the existence of an openly gay presidential candidate. What can we take away from the ups, downs, sweeping changes, and retrenchments of LGBTQIA+ activism and queer existence in the U.S. over the last 50 years? What should we be thinking about as we strategize for an epically amazing queer future?

Hanne Blank, Author and Activist, @hanneblank

3:15 PM - 4:15 PM — Session 3

Keynote Q&A

Session 3A — Kehr Union Building 345A

Join Hanne Blank to further discuss her keynote address during this informal Q&A.

Hanne Blank, Author and Activist, @hanneblank

Burns, Itches, Stigma

Session 3B — Kehr Union Building 345B

This session will allow you to understand the dynamics of STIs and Stigma. Come learn what STIs are and how they have impacted the LGBTQA+ community. You will also learn safe sex prevention methods and ways to communicate condom negotiation.

Jacob Kelley, HIV Case Manager, Caring Communities & Graduate Student, Widener University, jpkelley02@gmail.com

Representation in Video Games: How far have we come?

Session 3C — Kehr Union Building 230

Video games as a medium for expression has expanded greatly within the past few years. There have been nods to LGBT and queer representation in games for many years, but only recently have games started to attempt to represent differing sexuality and gender identities via "canon" lore and narratives. Explore the different characters that started this movement, and learn about the types of games that have the greatest representation for different identities.

Emily Pope, Graduate Student, Millersville University, s.pope.michael@gmail.com

Community Inclusion Includes the LGBTQ Community, Part I

Session 3D — Kehr Union Building 231

People with intellectual and developmental disabilities (ID/DD) remain some of the most-excluded people in society, despite 2019 marking twenty years since the monumental Olmstead Decision. Within the LGBTQ community, this population remains strikingly-invisible. This presentation will consist of educating the audience on basic terminology related to ID/DD, a Q&A on audience members' personal experiences with people who have ID/DD, and leave the audience with a basic introduction to the intersection of queer and trans identities with intellectual and other developmental disabilities.

Cassandra "Cassie" Cooper, Student of Social Work, Artist, Luzerne County Community College, cosmicgoddess19901999@gmail.com

Your Presence Matters to God:

An Inclusive Christian Worship Service

Session 3E — Kehr Union Building 240

Ever wonder if your presence matters? Ever been told by words or actions that you don't matter? Come explore with us. What if we really do matter to a loving, seeking God? We in the United Church of Christ believe in a still-speaking God and in the worth and dignity of all persons just as they were created, God's beautifully diverse, beloved children. Please join us as we worship God, share in Holy Communion where the table is open to all, and leave with the hope that our presence matters more than we can imagine.

Darcy Decker, Member, Open and Affirming Journey Team, Shiloh United Church of Christ, Danville PA

Rev Mary Schmotzer, Pastor, Shiloh United Church of Christ, Danville PA, mainoffice@shilohucc.org

Rev Brad Walmer, Pastor, New Covenant United Church of Christ, ncucc@comcast.net

4:30 PM - 5:30 PM — Session 4

Asexual and Aeromantic Peoples' Identity Forum

Session 4A — Kehr Union Building 345A

This session will provide a networking opportunity for conference attendees that self identify as asexual and aeromantic.
Moderator: *Jacob Kelley*, Graduate Student, Widener University

Polyamorous Peoples' Identity Forum

Session 4B — Kehr Union Building 345B

This session will provide a networking opportunity for conference attendees that self identify as polyamorous.
Moderator: *Dave Kube*, Associate Professor of Photography, Bloomsburg University

Queer People with Disabilities Identity Forum

Session 4C — Kehr Union Building 230

This session will provide a networking opportunity for conference attendees that self identify as queer people with disabilities.

Moderator: *Scott Ellis*, Doctoral Student and Senior Lecturer in Public Health, Newcastle University

Queer People of Color Identity Forum

Session 4D — Kehr Union Building 231

This session will provide a networking opportunity for conference attendees that self identify as queer people of color.

Moderator: *Shuzhen Huang*, Assistant Professor of Communication Studies, Bloomsburg University

Moderator: *Kristen Lewis*, Assistant Professor of Chemistry, Bloomsburg University

Body Positivity Identity Forum

Session 4E — Kehr Union Building 240

This session will provide a networking opportunity for conference attendees interested in speaking about and sharing their own experiences regarding the body positive movement.

Moderator: *Curtis W. Hoover*, Director of Student Affairs, Penn State Mont Alto

6:00 - 10:00 p.m.

Movie and Game Night! — Kehr Union Building, Ballroom

Join us for a fun night of movies and games hosted by the Bloomsburg University Equality Alliance.
Candy, Snacks, Pizza, Popcorn, and Drinks will be provided!

**Thank you for attending the
12th Annual Mid-Atlantic LGBTQA Conference!**

Please take a few moments to complete our online survey at
bloomu.edu/LGBTQA/Conference/Survey or scan here:

Attendees who complete the survey before November 30 will be
entered in a drawing for a free pass to the 2020 conference!



Schedule—Sunday, November 4, 2018

8:00 a.m. Registration — Kehr Union Building, Ballroom Lobby (Fourth Floor)

8:00 a.m. Continental Breakfast — Kehr Union Building, Ballroom

9:00 - 9:30 a.m. Kehr Union Building, Ballroom

Welcome to Day 3!

Jessy Defenderfer, Conference Chair, Assistant Professor of Political Science, Bloomsburg University

Damien Marken, Conference Vice-Chair, Assistant Professor of Anthropology, Bloomsburg University

Notes:

Save the date!

The 13th Annual Mid-Atlantic LGBTQA Conference

Hindsight is 20/20:

The Past is a Mirror to the Future.

November 6-8, 2020

Reflections offer a unique opportunity to pause and consider the image before us.

We see an LGBTQ community that has demonstrated resilience in difficult times—often with scars that remind us of those struggles.

But reflections also offer a glimpse at the beauty of our diversity, the shimmer of our fabulousness, and the glitter of the victories to come.

Be on the lookout for a Call for Proposals which will be circulated soon.

10:00 AM - 11:00 AM — Session 5

Queering Campus Narratives:

A conversation on how to uplift and center LGBTQIA histories

Session 5A — Kehr Union Building 345A

As Universities and colleges continue to write the history of their institutions, how can we begin to have an open and honest conversation with the queer alum about what it was like (and continues to be like) to be LGBTQIA on campus? Join Eric Anglero, Princeton University's LGBT Center Program Coordinator and history graduate from Stockton University, to talk about strategizing how to implement programs that uplift LGBTQIA voices and experiences to the narratives of your school's history.

Eric Anglero, Program Coordinator, Princeton University, eanglero@princeton.edu

Creating an Inclusive Classroom and Curriculum

Session 5B — Kehr Union Building 345B

This session will focus on those who have and continue to fall through the cracks of our current education system. We will discuss what it means to be openly queer both as a student and as an educator. There will be discussions on when and when not to come out in a workplace as well as "how to handle other issues as they arise". Also, we will learn what educators can do to help their students as well as how to teach them more than just what is in their textbooks.

Kacey Christiansen, Student, Lambda Outreach Coordinator, Nazareth College, kchrist4@mail.naz.edu

Take To The Streets: From Revolution to Celebration.

50 Years Since Stonewall and the Legacy of Early Activists

Session 5C — Kehr Union Building 230

For this presentation, Lycoming Students Rory Mendat and Rebecca Wilson discuss the changing nature of Pride celebrations in the fifty years since the Stonewall Riots. Based on research conducted for their undergraduate history course, Rights Reform and Protest, their projects dive into the essential elements of pride celebrations, as well as the erasure of prominent trans women and their contributions to the fight for gay liberation from the very beginning.

Rebecca Wilson, Student, Lycoming College, wilrebe@lycoming.edu

Rory Mendat, Student, Lycoming College, menrory@lycoming.edu

New Heteronormativity, a Gay-Straight Tipping Point and a New Model of Inclusion: Innovative Suicide Prevention for Students?

Session 5D — Kehr Union Building 231

An individual academic presentation, I use an interactive approach to incorporate the ideas and experiences of attendees and reflect them in the discussion. Videos that reflect my research design and findings are shown to generate debate and to contextualize the discussion. The presentation includes research findings and an opportunity to discuss future innovation in LGBT student suicide prevention strategies that consider emerging understanding of heteronormative constructs. Research questions were broad, and the presentation reflects this approach, asking us to reflect on questions such as student resilience, isolation and inclusion. We will also consider the role of peers outside of the LGBTQ+ community, to become role models, however excluded we feel from their social sphere.

Scott Ellis, Doctoral Student and Senior Lecturer in Public Health, Newcastle University, s.a.ellis2@protonmail.ch

I'm Addicted to U Dontcha Kno that Ur Toxic

Session 5E — Kehr Union Building 240

During college, students tend to experience their first serious romantic relationships, leading to a stronger sense of commitment, longevity, and intimacy within the relationships. Because these individuals are searching for satisfaction and fulfillment, it is not uncommon that their relationship behaviors become manipulative, controlling, and toxic. In order to be positively influential educators, allies, and partners, this session provides the information and tools on red flags, relationship do and do nots, and resources to make navigating the romantic realm more positive.

Hannah Hench, Graduate Hall Director, Bloomsburg University, hgh47608@huskies.bloomu.edu

Courtney Enderline, Graduate Hall Director, Bloomsburg University, cre40696@huskies.bloomu.edu

11:15 AM - 12:15 PM — Session 6

The B in LGBTQIA+:

A Continuous Fight for Visibility and Validation

Session 6A — Kehr Union Building 345A

Bi-erasure has been a continuous, internal struggle within the LGBTQIA+ community. Despite being one of the largest groups within the queer community, bisexual individuals have been historically underrepresented and marginalized both within the queer community and beyond in the cisgender, heterosexual population. In this session, the facilitators will ask attendees to actively engage in a conversation about bisexuality, navigating its dynamics in the LGBTQIA+ community, and fostering inclusivity moving forward.

Melanie Morenz, Graduate Student, Bloomsburg University, mam25601@huskies.bloomu.edu

Christopher Wounderly, Graduate Student, Bloomsburg University, cjw90972@huskies.bloomu.edu

TRANSformational Leadership

Session 6B — Kehr Union Building 345B

In this workshop, we'll discuss what it takes to be a leader and how to identify and build on the leadership skills you already have, including communication, soft skills, teamwork, and goal setting. Through Q&A and open discussion we'll also talk about some of the challenges faced by LGBTQIA+ high school and college age individuals in stepping up to leadership positions, how to learn from them, and how to overcome them. By the time you leave this workshop I hope to equip you with a better understanding what it means to be a leader and the mindset that anyone can be a leader.

Eli V Johnson, Undergraduate Student, East Stroudsburg University, ejohnson28@live.esu.edu

All Hail All Womxn of Color

Session 6C — Kehr Union Building 230

This session will focus on shedding light to trans and queer women and femme identified folks who have led social justice movements and created paths for liberation. Many people don't know who led Stonewall, many don't know the identities of the leaders of Black Lives Matter, but it is important to pay homage and respect to the people who have led us to where we are. We must also pay attention to their identities, so they aren't continuously swept under the rug and disregarded due to patriarchy, colonization, and supremacy. Women and femmes of color have done the work that has been revolutionary for many communities and this session will bring light to their work while explaining the importance of inclusive activism.

Nahje Royster, Student, West Chester University, NR852569@WCUPA.EDU

Prevailing Past the End

Session 6D — Kehr Union Building 231

This session is an interactive session that discusses difficult subjects such as the prevalence of suicide in the LGBTQ+ community. We will talk about how to overcome and work through common difficulties such as societal acceptance, personal acceptance, and how to live a prideful and happy life. There will also be time to talk and ask questions about different struggles within the community, and possible ways to cope with them.

Sarah Tekavec, Student, Alderson Broaddus University, tekavecsn@battlers.ab.edu

12:30 PM - 1:30 PM — Session 7

Homosexuality in the Military

Session 7A — Kehr Union Building 345A

Being openly gay in the military has allowed me to be accepted by many in the service through growth and understanding. I will share my story of how I have seen the military has arisen to expand towards a more inclusive environment.

Joshua Kelley, Petty Officer 2nd class (PO2) Kelley, US Navy, joshua00307@gmail.com

Speaking Out on Campus: Know Your Rights!

Session 7B — Kehr Union Building 345B

Every major civil rights movement has relied on one fundamental principle to spread its message: freedom of speech. That principle is especially important on campus, where student activism reflects and often leads political and social movements happening across the country. Unfortunately, many LGBTQIA+ students have found their voices stifled by administrators, campus police, or overly-restrictive school policies. The Foundation for Individual Rights in Education (FIRE) is here to help—come learn about your right to speak up and out on campus. FIRE attorney Marieke Tuthill Beck-Coon will host an interactive presentation on student First Amendment rights and how you can protect your rights and those of others.

Marieke Tuthill Beck-Coon, Director of Litigation, Foundation for Individual Rights in Education, marieke@thefire.org

**“De-centre your privilege, put your phone down and stop being so fucking outraged by everything”:
reflections from the fringes.**

Session 7C — Kehr Union Building 230

Something peculiar is happening amongst us (if you believe there is an ‘us’). We are more visible than ever before but within our communities and tribes, fractures are getting wider. Young LGBTQA people reject the notions of their forebears in defining themselves based on labels in favor of celebrating an ever-diverse catalogue of identities. So why are we lacking companionship and rejecting social opportunities to show our presence? In this autoethnographic discussion, I present my (unexpected) findings from three years of travelling across the US and find online communities designed to bring us together might well be prying us apart.

Scott Ellis, Doctoral Student and Senior Lecturer in Public Health, Newcastle University, s.a.ellis2@protonmail.ch

Overcoming Healthcare Barriers: Your Presence Matters

Session 7D — Kehr Union Building 231

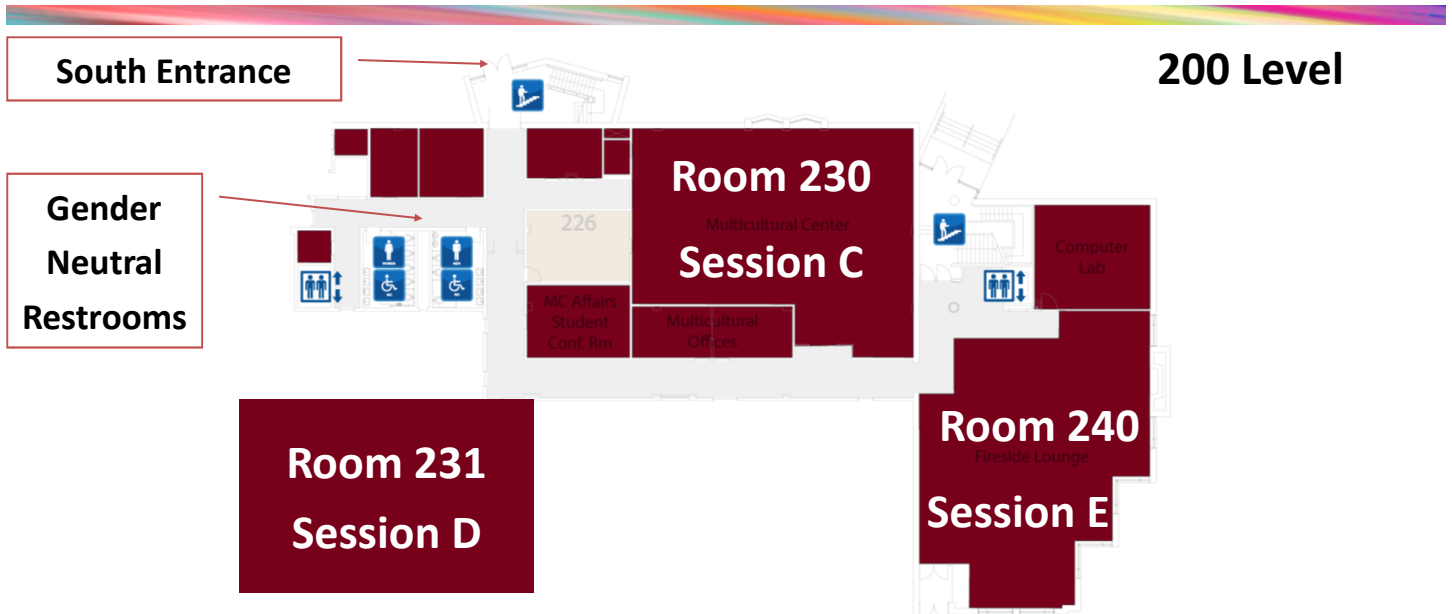
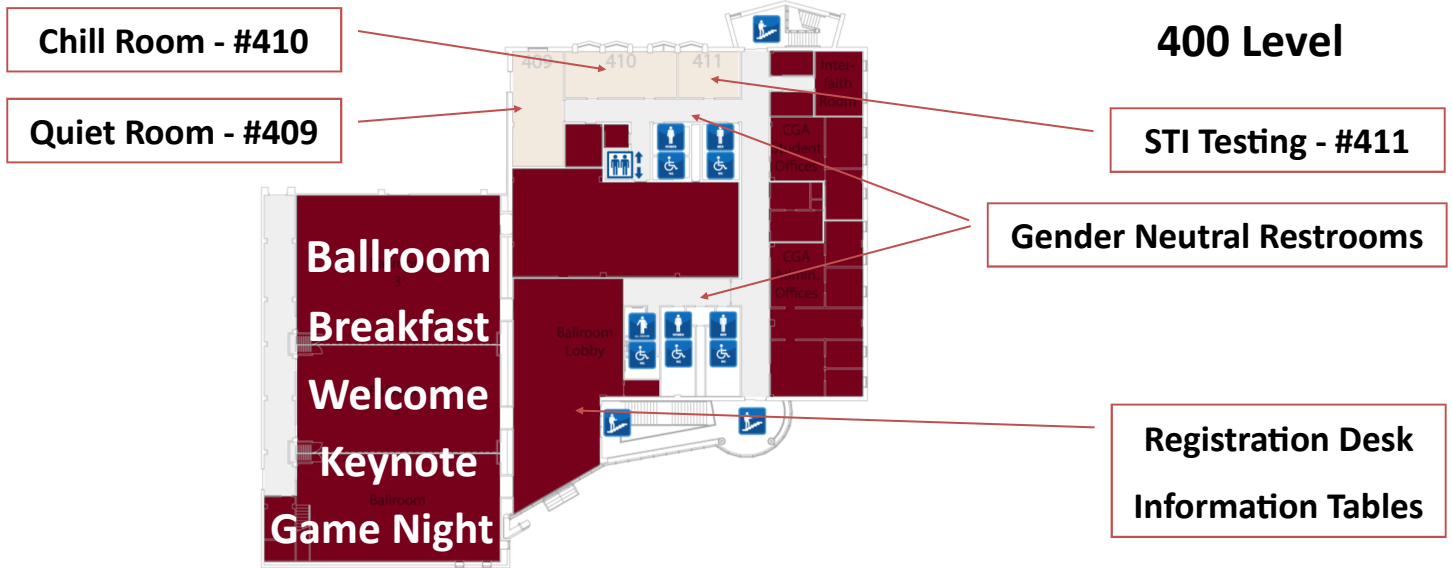
Healthcare systems have not always been welcoming or even friendly to members of the LGBTQ+ community and this has created disparities in care. Geisinger has been on a journey to change our systems and, more importantly, change the way we interact with our patients. Learn why health systems need to do better at providing inclusive and respectful care from the moment patients walk in the door. We’ll discuss clinical and behavioral needs of LGBTQ+ patients, and what patients can do to take control of their own healthcare. Your presence matters, learn how you can take an active role to ensure quality, inclusive, respectful healthcare.

Aliasgar Chittalia, MD, Physician, Geisinger Health System, azchittalia@geisinger.edu

Heather Marney, Director, Geisinger Health System, hlmarney1@geisinger.edu

D Coen, dcoen@geisinger.edu

Room locations within Kehr Union Building



Internet Access

Bloomsburg University provides a state-of-the-art 802.11a/g/n/ac wireless network deployed across campus. This network is accessible to all faculty, staff, students, and guests. To access the internet on your Wi-Fi capable device, connect to the "bloomu" network.

