

**Mid Atlantic  
LGBTQA Conference**



**Alphabet Soup: Exploring Our Many Faces**

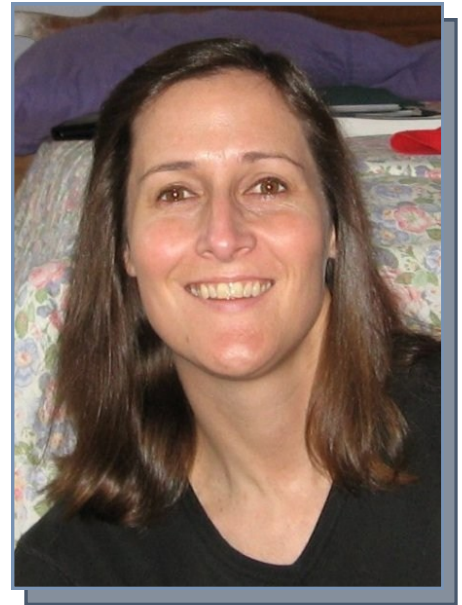
**November 2 - 3, 2012**

**Bloomsburg University of Pennsylvania**

## Welcome from the Conference Chair

Dear Summit Participants:

Welcome to the 5th annual Mid-Atlantic LGBTQA Conference! This year we continue what has now become a tradition of addressing some of the most pressing and contemporary issues facing the LGBTQIA community. Our theme this year, "Alphabet Soup: Exploring Our Many Faces," focuses on the enormous diversity within the LGBTQIA community and the concerns that often arise from misunderstandings of this diversity. Our keynote speaker, Ben Singer, will discuss some of the reductive models found in numerous interpretations of transgender identity among a variety of groups. The program also offers a number of other panels that address the diversity in our community in areas such as health; state and national political initiatives that could affect our community; religion and spirituality; and ally recruitment and retention. We hope that you find this program interesting, exciting, and enlightening.



In my first year chairing the committee for the conference, I am honored to have worked with some very dedicated and hard-working individuals who have contributed tremendously each year since the beginning to make this conference special. As such, I want to recognize Deb Chamberlain, Jean Downing, Christina Francis, Asa Kelley, Leilani Kupo, Casey McCloskey, John Shirley, Kelly Tenzek, and Craig Young for serving on the committee and making the planning process seamless and fun. I would also like to announce the theme and keynote speaker for the 6th Annual Mid-Atlantic LGBTQA Conference to be held here Nov. 1-2, 2013. Next year's theme: "Unmasking prejudice and dispelling myths in the LGBTQA world," will continue the ongoing discussion of misunderstandings surrounding the LGBTQIA community. William Meyer, Associate Clinical Professor in the Departments of Psychiatry and OB/GYN at Duke University Medical Center will discuss the civil rights struggles related to the diagnosis of homosexuality, a diagnosis which has evolved and has finally been deleted from psychiatry's official nomenclature about the community.

In closing, we are pleased to have all of you with us for yet another great conference. Enjoy!

Sincerely,

Dr. Anna K Turnage  
Conference Chair

## 2012 Mid-Atlantic LGBTQA Conference Planning Committee

Debra Chamberlain  
Jean Downing  
Christina Francis  
Asa Kelley  
V. Leilani Kupo  
Casey McCloskey  
John Shirley  
Kelly Tenzek  
Anna Turnage, Chair  
Craig Young

## About our Keynote Speaker

Ben Singer recently completed his Ph.D. at Rutgers University with a dissertation titled “Towards a Transgender Sublime: The Politics of Excess in Trans-specific Cultural Production.” This project offers a corrective lens to limited interpretations of the category transgender across literary and medical discourses, as well as visual culture and new media. Most often, the term transgender is used as a stable category of personhood, or, alternately, as an umbrella term that encompasses all sex and gender variance. Such usage results in reductive models in medical and educational contexts, as well as closed narrative structures in literary and popular cultural depictions of trans-subjectivity and embodiment. By contrast, this discussion understands “transgender” as a proliferative matrix that produces representations of rapidly shifting embodiments and identities that exceed sex/gender categorization. Ben’s work draws broadly upon his training in textual analysis combined with media and cultural theory, ethnography, and sexuality and gender studies—with an emphasis on transgender activism and theories.



During his doctoral studies Ben pursued a parallel career as a public health consultant, conducting trainings on LGBT health equity. He has consulted on local, state and national projects with the U.S. Centers for Disease Control and Prevention, the Health Resources and Services Administration, the Philadelphia Department of Public Health’s AIDS Activities Coordinating Office, and other health and human service organizations. Ben has also designed and implemented programs such as co-founding and directing the Trans-health Information Project (TIP), a program of Prevention Point Philadelphia needle exchange and the Gay and Lesbian Latino AIDS Education Initiative, with funding by the U.S. Centers for Disease Control and Prevention. He recently completed a three-year National Institute of Health training program on Behavioral Science Training in Drug Abuse Research at the National Development Research Institute in New York City.

Ben has taught on issues of gender and sexuality at various institutions; this includes conducting the first trans studies seminar “Transgender Queries in Medicine, Law, Politics and Culture” at Barnard College. He is currently a Lecturer in the Gender, Sexuality and Women’s Studies Program and a Research Scholar in the Alice Paul Center at the University of Pennsylvania.

## The Committee would like to thank the following people for their valuable contributions to the Conference:

### **Bloomsburg University**

David L. Soltz, President

Maria Bauman, General Manager, ARAMARK

ARAMARK at Bloomsburg University

Ken Dunlap, Media Services Coordinator, Kehr Union Building

Kristi Getty, Scheduling Coordinator, Student Activities

Mary Prout, Facilities Scheduling

Bloomsburg University Police

## Schedule—Friday, November 2, 2012

7:30 - 10:30 p.m.

Moose Exchange, 203 West Main St., Bloomsburg

### Registration & Entertainment

Pizza Social, Drag Bingo, and Bowling

## Schedule—Saturday, November 3, 2012

8:00 - 9:00 a.m.

McCormick Center Lobby

### Registration & Continental Breakfast

9:00 - 9:10 a.m.

McCormick Center 1303

### Welcome and Opening Remarks

*Anna Turnage*, Mid-Atlantic LGBTQA Conference Chair, Assistant Professor of Communication Studies

*Craig Young*, BU LGBTQA Commission Chair, Assistant Professor of Early Childhood and Adolescent Education

### 9:15 - 10:15 a.m. — Session 1

#### Creating Change by Creating Allies: Exploring the A in LGBTQA

Session 1A — McCormick Center 1303

This session will present a successful model of LGBTQ Ally Training as a vehicle for creating change and a warmer campus climate.

*Jacqueline S. Hodes*, West Chester University

*Hannah Schmitz*, West Chester University

*Aneesah Smith*, West Chester University

#### Providing LGBTQA Peer Education Panels in the University Classroom

Session 1B — McCormick Center 1316

Facilitated by volunteer students, faculty and staff, LGBTQA peer education panels are offered in classroom settings. These panels focus on Lesbian, Gay, Bisexual, Transgendered, and Ally issues. In this interactive workshop, we will discuss the Bloomsburg University LGBTQA Panel process, including outreach to faculty and training for panel volunteers.

*Alana Atchinson*, Assistant Professor of Social Work, Bloomsburg University

#### Lobbying: It's Not Just for Corporations Anymore

Session 1C — McCormick Center 2303

Broader acceptance and respect for the LGBT community isn't enough. The law has to change. But how? Learn more about working the halls of state government with the lead lobbyist of the ACLU of Pennsylvania.

*Andy Hoover*, ACLU of Pennsylvania

#### Safe Zones: An Analysis of a Community-Wide Approach to Creating Supportive Environments for Individuals Who are Gay, Lesbian, Bisexual, and/or Transgender

Session 1D — McCormick Center 2314

This presentation seeks to compare and contrast the strategies used in the standard approach to Safe Zone program development with our community-wide approach.

*Amie R. McKibban*, University of Southern Indiana

## **10:30 - 11:45 a.m. — Session 2**

### **Moving the Campus Community Forward: The Critical Work of the BU LGBTQA Commission**

**Session 2A — McCormick Center 1303**

Members of the Bloomsburg University LGBTQA Commission, will describe the important present and future work of the commission and its significance to broader campus issues.

*Craig Young*, BU LGBTQA Commission Chair, Assistant Professor of Early Childhood and Adolescent Education

*Gretchen Osterman*, BU LGBTQA Commission Vice-Chair, Assistant Dean of Students for Greek Life

*Asa Kelley*, BU LGBTQA Commission Secretary, Instructional Media Specialist

*Leilani Kupo*, BU LGBTQA Resource Center Committee Chair, Assistant Director of Social Equity

*MarcAntoni Macias*, BU LGBTQA Commission Visibility Committee Chair, Graduate Student—Counseling: Student Affairs

*Anna Turnage*, Mid-Atlantic LGBTQA Conference Chair, Assistant Professor of Communication Studies

### **Transgender Policy Committee: Advocating for a Safer Campus**

**Session 2B — McCormick Center 1316**

This session will present to participants West Chester University's Transgender Policy Committee, a successful model for advocating for a safer and more inclusive environment for all members of the campus community.

*Breckin DeWane*, Student, West Chester University

*Martin Gilliam-Kennedy*, Student, West Chester University

*Camdyn Thompson*, Student, West Chester University

*Hannah Schmitz*, Graduate Assistant, West Chester University

### **Developing Allies in Higher Education**

**Session 2D — McCormick Center 2314**

This interactive session will introduce how college students may be affected by a campus that is unwelcoming or under-welcoming to members of the LGBTIQ community and will empower participants to develop action items for inclusion.

*Kathryn E. Mattes*, Penn State University

*April Harris-Snyder*, Penn State University

## **Noon - 1:00 p.m.**

**Kehr Union, Multipurpose Room 345**

### **Lunch**

Greetings and Remarks from *Dr. Jonathan M. Lincoln*, Vice Provost and Dean for Undergraduate Education

## **1:15 - 2:15 p.m.**

**Interactive Workshop — Kehr Union, Ballroom**

### **Bounce**

This workshop will be about collaboration, communication, interacting, and most importantly having fun with as many people as you can in attendance at the conference. Many times a conference doesn't have time set aside for meeting other people in attendance but this is that opportunity. The activities will be led by the Quest team at Bloomsburg University whose focus is experiential programming with clients of all ages, sizes, and abilities. You will be tasked to discuss and solve problems with rapidly changing teams during this fast-paced activity session.

*Brett Simpson*, Executive Director, Bloomsburg University Quest

**2: 30 - 3:30 p.m.**

**Keynote Address — McCormick Center 1303**

**Alphabet Re-View: Unpacking the Additive Politics of L+G+B+T+**

Dr. Singer will be addressing the ways that we imagine politics, particularly through the use of the additive alphabet approach. Just adding another letter to the list suggests that the letter is the end goal, rather than a true understanding of the identities associated with those letters. For example, in trans-studies and activism, if we just add the T for transgender, then people believe we've instantly created an inclusive politics. Instead, he would like to suggest that T actually means \*transformation\* not simply transgender. T for transformation might do a better job of encompassing the complexity of sexual identities. Dr. Singer would like to challenge us to realize that when we add letters we take on an obligation to re-view, and re-think, our ways of doing politics and to re-imagine our political frames, goals, priorities, and ways of thinking.

*Ben Singer, Visiting Professor, University of Pennsylvania, Gender, Sexuality, and Women's Studies Department*

**3:30 - 4:30 p.m. — Session 3**

**"He's a Hot Mess": A Panel Discussion about Navigating Life, Love, and Transitioning as an FTM**

**Session 3A — McCormick Center 1303**

This panel follows the personal journey of a transgender student. The discussion includes family members, friends, and significant others to address transgender questions and issues from a personal standpoint.

*Ezra Papincak, Student, Bloomsburg University*

*Donna Papincak*

*Bethany Papincak*

*Ashley Furman*

**Navigating Your Sexual Desire & Health**

**Session 3B — McCormick Center 1316**

This workshop walks participants through their past, present, and future using pleasure-based sexuality education to take a comprehensive approach to sexual health. Includes worksheets to help participants map their desires. The workshop includes a panel of speakers who, after opening remarks, will work as small group facilitators.

*Julian Cecil Haas, Penn State University*

**Religion and the LGBTQ Community**

**Session 3C — McCormick Center 2303**

This panel addresses the religious/spiritual concerns of the LGBTQ community. Over the past few decades various faith traditions have striven to meet the needs of the community, and for this reason the panel is comprised of a variety of clergy representing affirming religious institutions and groups.

*Moderator: John Shirley, Bloomsburg University*

*Dr. Karl Pom-Faudre, Geisinger Medical Center*

*Rabbi Nina Mande, Beth El Synagogue*

*Reverend Darlene Little, First Presbyterian Church*

*Reverend Canon Katherine Harrigan, Rector of St. Paul's*

*Pastor Gretchen Johanson, Christ United Lutheran Church, Catawissa and St. Peter Lutheran Church, Grovenia*

## **4:45 - 5:45 p.m. — Session 4**

### **Making Change in PA Governmental Policies**

**Session 4A — McCormick Center 1303**

In this session, the leadership of Equality PA will provide participants with an overall view of Pennsylvania's political climate and landscape in this critical year and highlight the potential victories and pitfalls faced by the LGBT Community in 2012.

*Adrian Shanker, Equality PA*

*Ted Martin, Equality PA*

### **Developing Advocates: Spiritual Communities and Progressive Faith Groups**

**Session 4B — McCormick Center 1316**

This session will highlight and explore best practices in working with spiritual and faith-based leadership on and off campus in order to deconstruct and demystify misconceptions that LGBTQQIA community members may perceive from broader society.

*Ted Cogar, Indiana University of Pennsylvania*

*Brian Patchcoski, Indiana University of Pennsylvania*

### **Redefining Student-Athlete Stereotypes on a College Campus**

**Session 4C — McCormick Center 2303**

As we celebrate 30 years of Title IX, have student athlete stereotypes really changed over the years? This presentation will offer a comparative review of literature in the field of student identity. Participants will have an opportunity to discuss current trends and problem solve some ways to continue to influence culture change on their campus. Current partnerships and programming ideas will be provided.

*Gretchen Osterman, Assistant Dean of Students for Greek Affairs, Bloomsburg University*

*Marc Antoni Macias, Graduate Assistant, Greek Affairs, Bloomsburg University*

### **Recruitment Retention & Succession: Three Keys to a Successful Student Organization or Small Non-Profit**

**Session 4D — McCormick Center 2314**

In this workshop, participants are given tangible skills and techniques to recruit more high quality members, to keep and cultivate the membership they have through membership development models, and to successfully pass on the organization from one executive board to the next.

*Julian Cecil Haas, Penn State University*

## **5:50 - 6:00 p.m.**

**McCormick Center 1303**

### **Closing Remarks**

*Anna Turnage, Conference Chair, Assistant Professor of Communication Studies*

# Save the date!

## The Sixth Annual Mid-Atlantic LGBTA Conference

### “Unmasking Prejudice and Dispelling Myths in the LGBTA World”

November 1-2, 2013

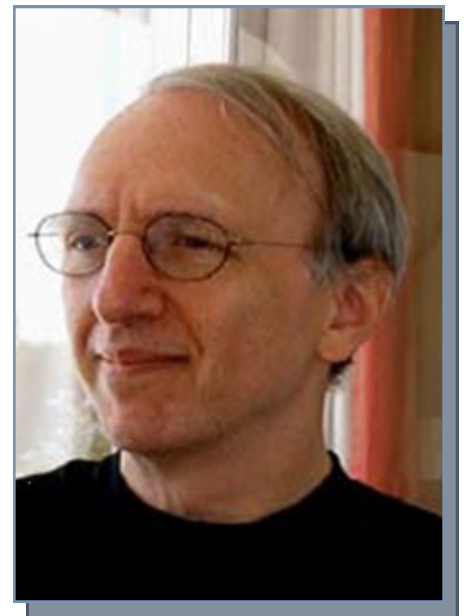
Bloomsburg University

The Sixth Annual Mid-Atlantic LGBTA Conference would like to announce next year's theme, “Unmasking Prejudice and Dispelling Myths in the LGBTA World” for November 1-2, 2013. Please mark your calendars. Be on the lookout for a Call for Papers which will be circulated in early 2013. We would also like to announce our 2013 keynote speaker, William Meyer, Associate Clinical Professor in the Departments of Psychiatry and OB/GYN at Duke University Medical Center. Please enjoy the brief keynote description and biography below:

### ON THE DIAGNOSIS AND ‘TREATMENT’ OF HOMOSEXUALITY:

#### WHEN PREJUDICE MASQUERADES AS SCIENCE

Few people know the civil rights struggle of how the diagnosis of homosexuality evolved and was finally deleted from psychiatry's official nomenclature. Over the years, many people suffered severe psychological injury by the very people who were ostensibly there to help them. Some of this tragic legacy continues today. This multi-media presentation begins in the 1950's and takes the audience through the tumultuous 60's and 70's up to present day to demonstrate the legacy and implications of psychiatry's once implacable position that “homosexuality is treatable psychopathology.” The presentation includes film clips and audio interviews from gay activists and establishment psychiatrists of that era, to see how internalized prejudicial attitudes affect everyone, including those who come asking for help and those who provide treatment. In this presentation, attendees will Learn how the diagnosis of homosexuality has evolved within psychiatry's official nomenclature; understand how social activism compelled psychiatry to examine its reasoning and its methods; appreciate how internalized prejudicial attitudes affect everyone, including those who come asking for help and those who provide treatment.



William S. Meyer, MSW is the Director of Training for the Department of Social Work and is an Associate Clinical Professor in the Departments of Psychiatry and OB/GYN at Duke University Medical Center. He has been a supervisor and team leader of 3rd year psychiatry residents for over 25 years. He is a past-president of the American Association for Psychoanalysis in Clinical Social Work and is a former Secretary of the National Academies of Practice. He is on the faculty of the Psychoanalytic Education Center of the Carolinas and he holds faculty appointments at The University of North Carolina and Smith College. He has lectured and written extensively on mental health related topics.

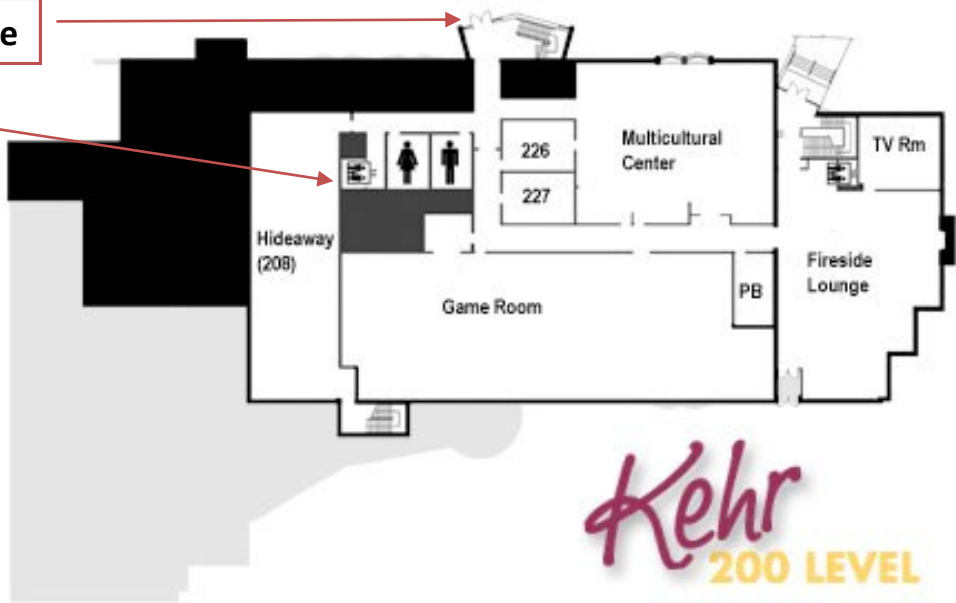




## Room locations within Kehr Union

Lower Entrance

Elevator



Elevator

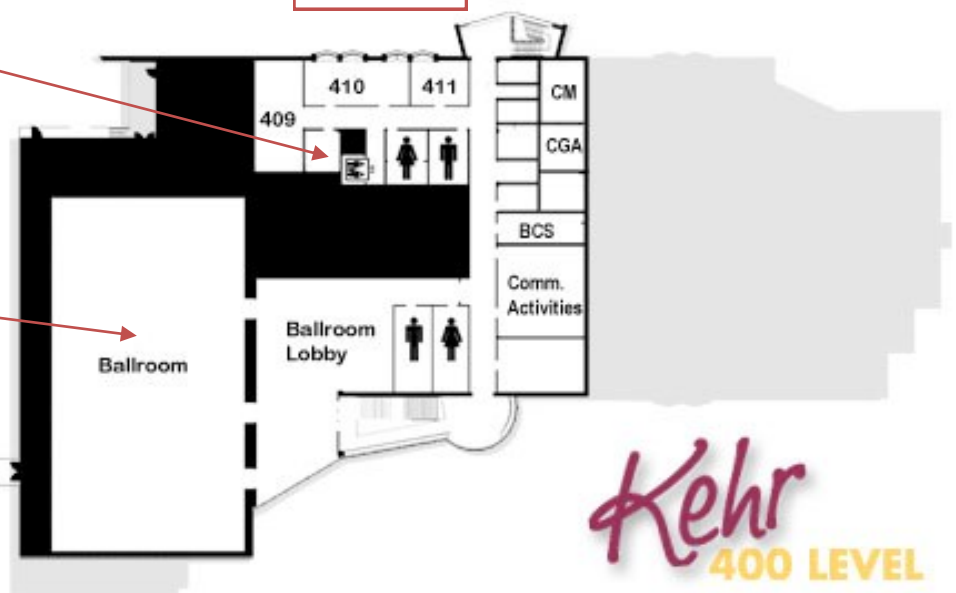
Lunch



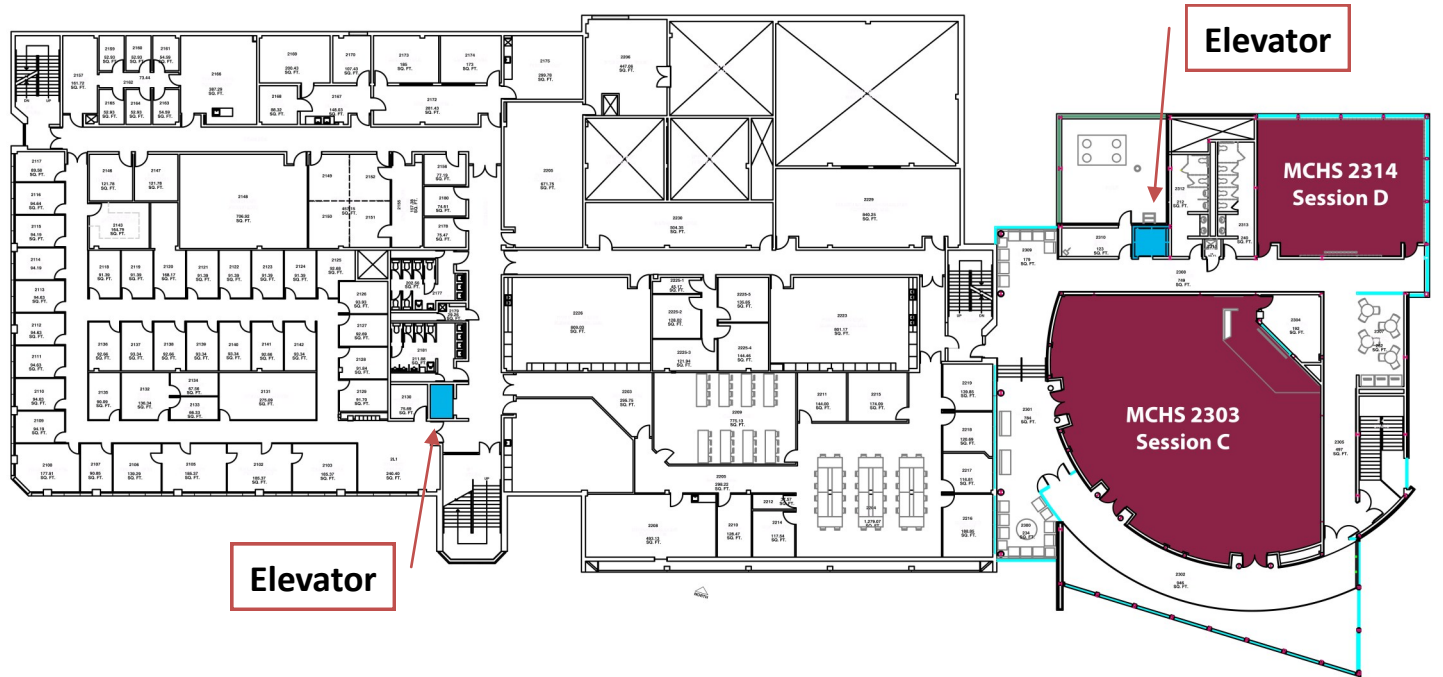
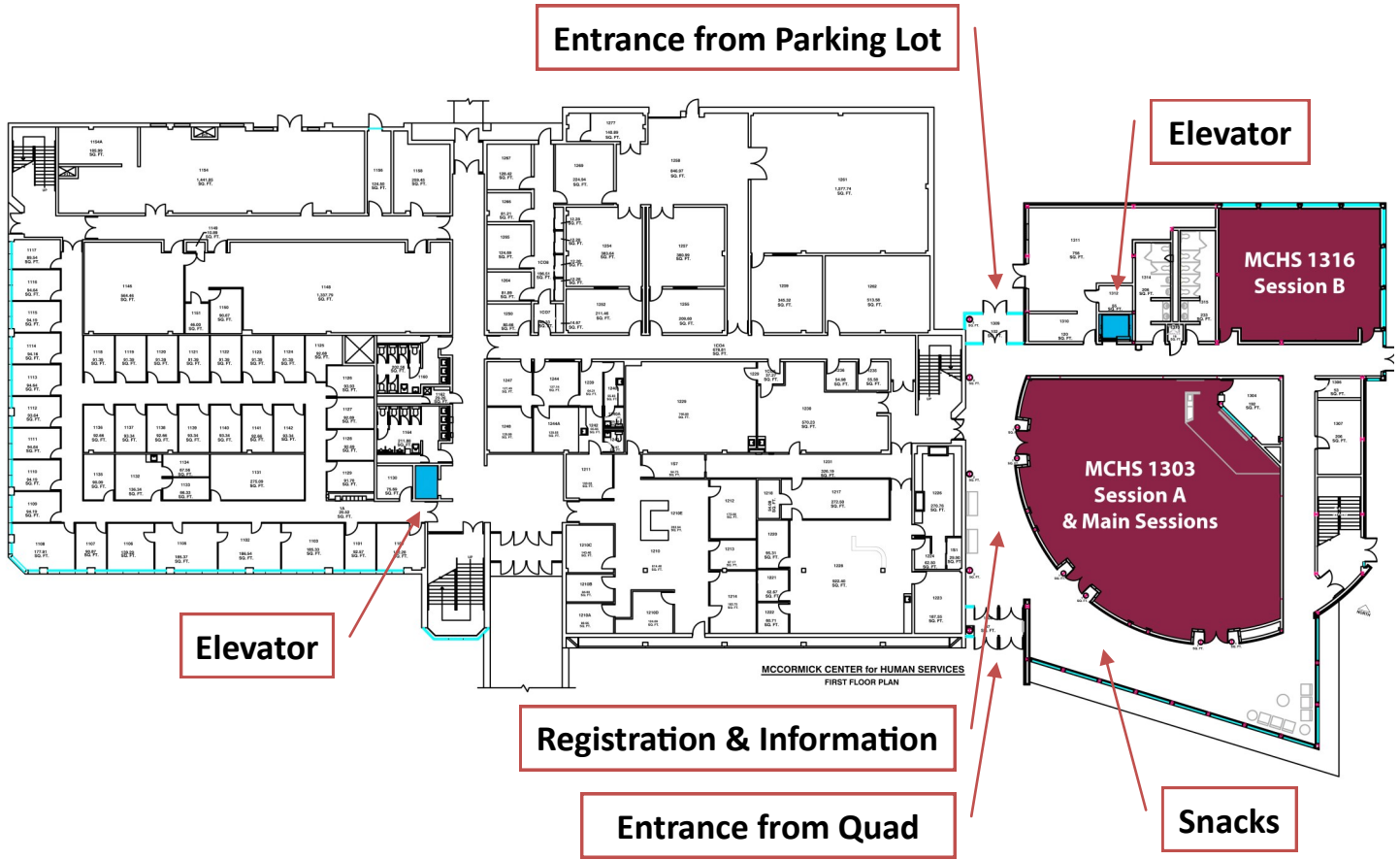
Main Entrance

Elevator

Bounce - Interactive Workshop



# Room locations within McCormick Center



# Internet Access

For your convenience, wireless internet access is available throughout campus. To access the internet from a laptop or other portable device, connect to the bloomu-guest network and open your web browser. You will be redirected to the bloomu-guest login page. You must enter the guest account credentials below. Once you authenticate, you will be able to browse the Internet.

Username: lgpta — Password: november

## Campus Map

